

Thanksgiving

4. Thanksgiving Day

Ensemble ad libitum

Music by GERT TH. WALTER
Christmas Suite Box, Op. 13 (2021)

A Broadly. $\text{♩} = 84$

Musical score for section A, measures 1-6. The score is for five parts: 1. Treble clef, 2. Treble clef, 3. Bass clef, 4. Bass clef, and 5. Bass clef. The key signature has one flat (B-flat) and the time signature is common time (C). The tempo is marked 'Broadly.' with a quarter note equal to 84 (♩ = 84). The dynamic is marked 'mf' (mezzo-forte) for each part. The music consists of simple, sustained notes.

B

Musical score for section B, measures 7-10. The score is for five parts: 1. Treble clef, 2. Treble clef, 3. Bass clef, 4. Bass clef, and 5. Bass clef. The key signature has one flat (B-flat) and the time signature is common time (C). The dynamic is marked 'mf' (mezzo-forte) for each part. The music consists of simple, sustained notes, with some parts having longer note values.

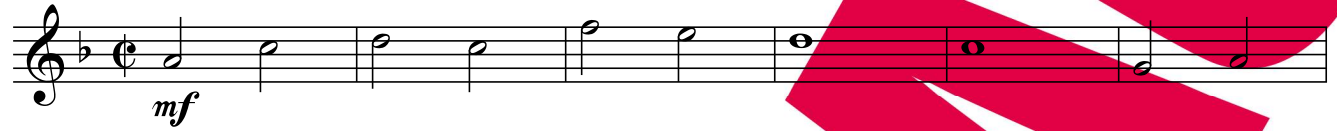
1. Stimme

4. Thanksgiving Day

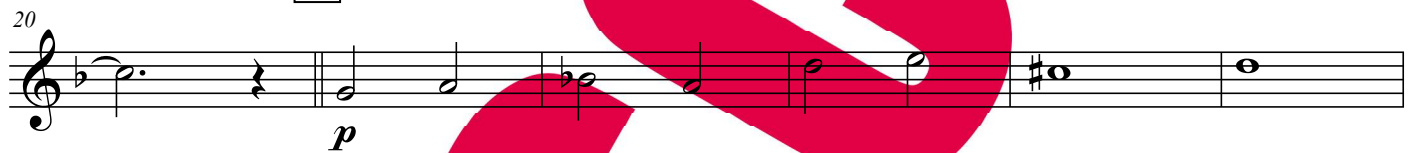
C - Stimme

Music by GERT TH. WALTER
Christmas Suite Box, Op. 13 (2021)

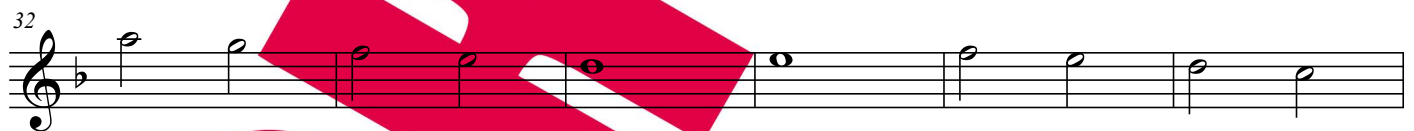
A Broadly. $\text{♩} = 84$



C



D



E

